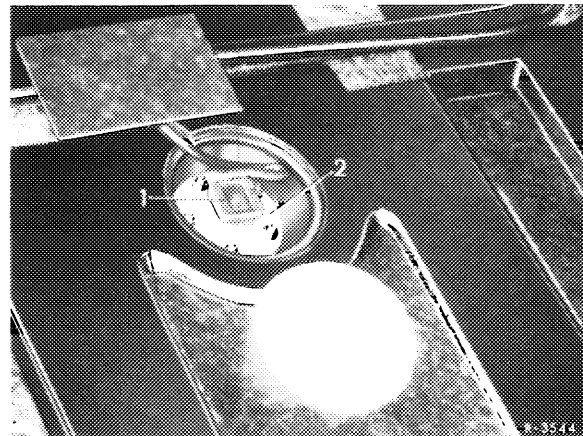


A. Model 115.1

Tightening torques	Nm
Immersion tube transmitter	3.5-4

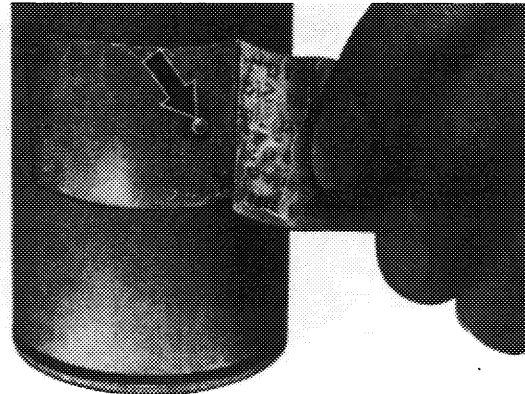
Removal

- 1 Take mat out of trunk and remove closing cover from floor of trunk.
- 2 Pull off coupler (1) on immersion tube transmitter (2).
- 3 Unscrew fastening nuts and pull out immersion tube transmitter.
- 4 Remove gasket from fuel tank and make sure that no sealing residue will drop inside tank.



Installation

- 5 For installation proceed vice versa as follows:
 - a) Use new gasket.
 - b) Remove locking pin (arrow) prior to installing immersion tube transmitter.
 - c) Plug-on coupler and check fuel readout for function.
 - d) Tighten nuts crosswise to 3.5-4 Nm.
 - e) Plug-on coupler for fuel readout.
 - f) Check for leaks.



K07 - K0702

B. Model 123.1 sedans and coupes

Tightening torque

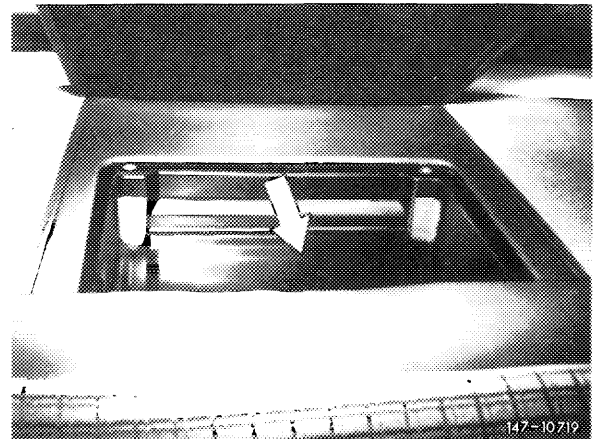
Nm

Immersion tube indicator

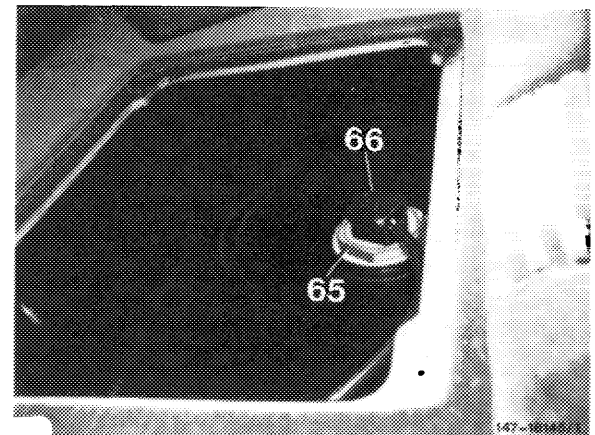
35–43

Removal

- 1 Remove first aid kit and storage tray (arrow).



- 2 Pull off coupler (66) for fuel readout on immersion tube transmitter (65) and secure against slipping off by means of wire.

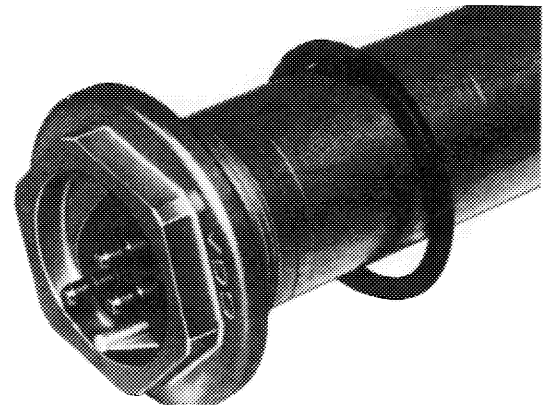


- 3 Unscrew immersion tube transmitter.

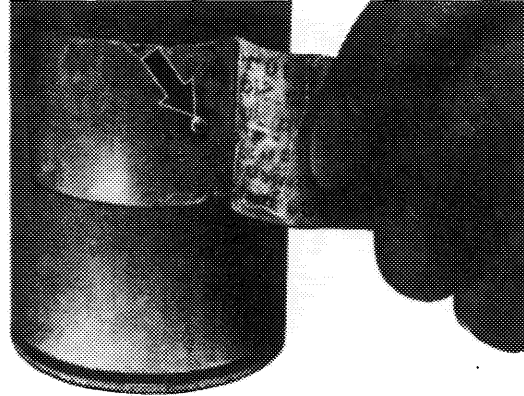
Installation

- 4 For installation proceed vice versa, paying attention to the following instructions:

- a) Use new rubber sealing ring.



- b) Prior to inserting immersion tube transmitter, remove locking pin (arrow).
- c) Plug-on coupler and check fuel readout for function.
- d) Install immersion tube transmitter and tighten to 35–43 Nm.
- e) Plug-on coupler for fuel readout.
- f) Check for leaks.

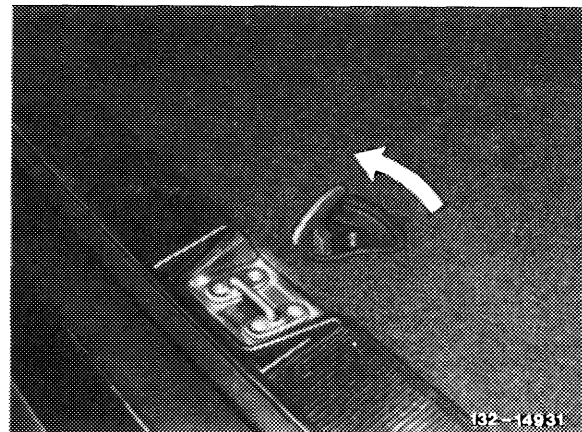


107-10702

C. Model 123.1 T-sedans and special vehicles with body made by others

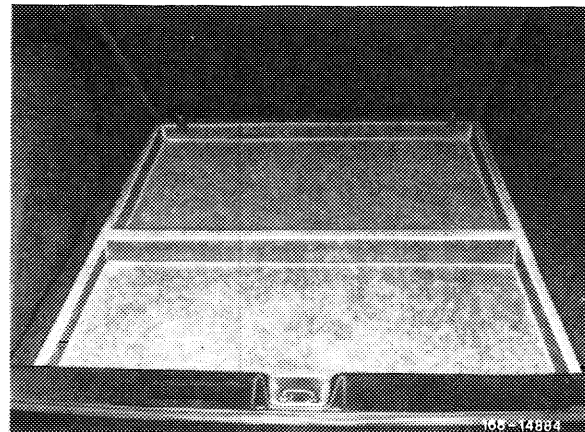
Removal

- 1 Loosen luggage compartment floor by turning tommy lock and remove .



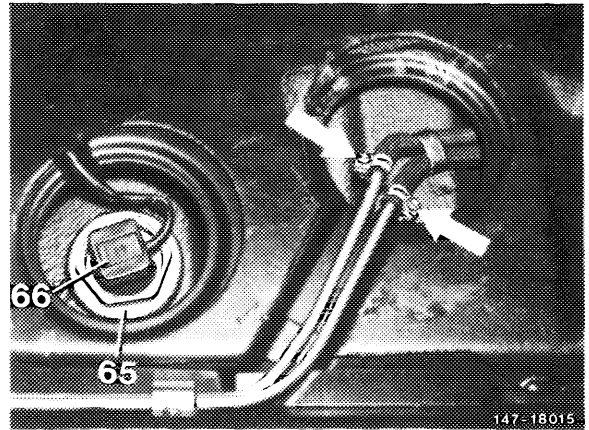
132-14931

- 2 Remove storage compartment.



106-14884

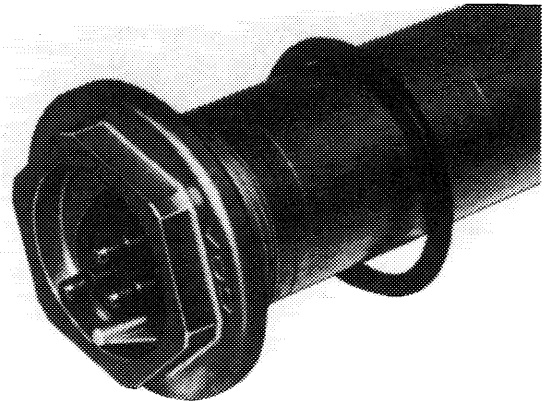
3 Pull off coupler (66) for fuel readout and unscrew immersion tube transmitter (65).



Installation

4 For installation proceed vice versa, proceed as follows:

a) Unse new rubber sealing ring.



b) Remove locking pin (arrow) prior to installing immersion tube transmitter.

c) Plug-on coupler and check operation of fuel readout.

d) Tighten immersion tube transmitter to 35–45 Nm.

e) Plug-on coupler for fuel readout.

f) Check for leaks.

