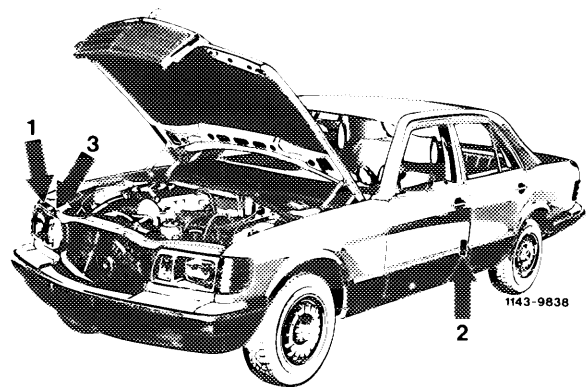
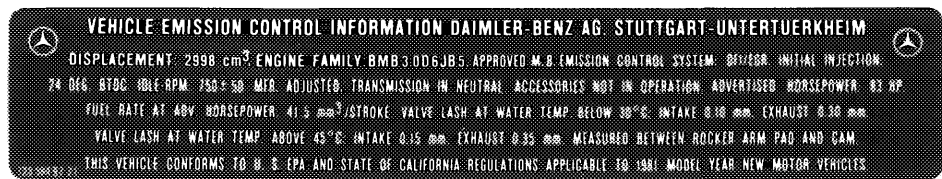


The vehicles delivered in California are identified by means of three identification labels, federal version vehicles with two.



**Identification label for emission control system on cross member in front of radiator (1)**

This label shows the engine identification data, as well as the most important engine adjusting data.

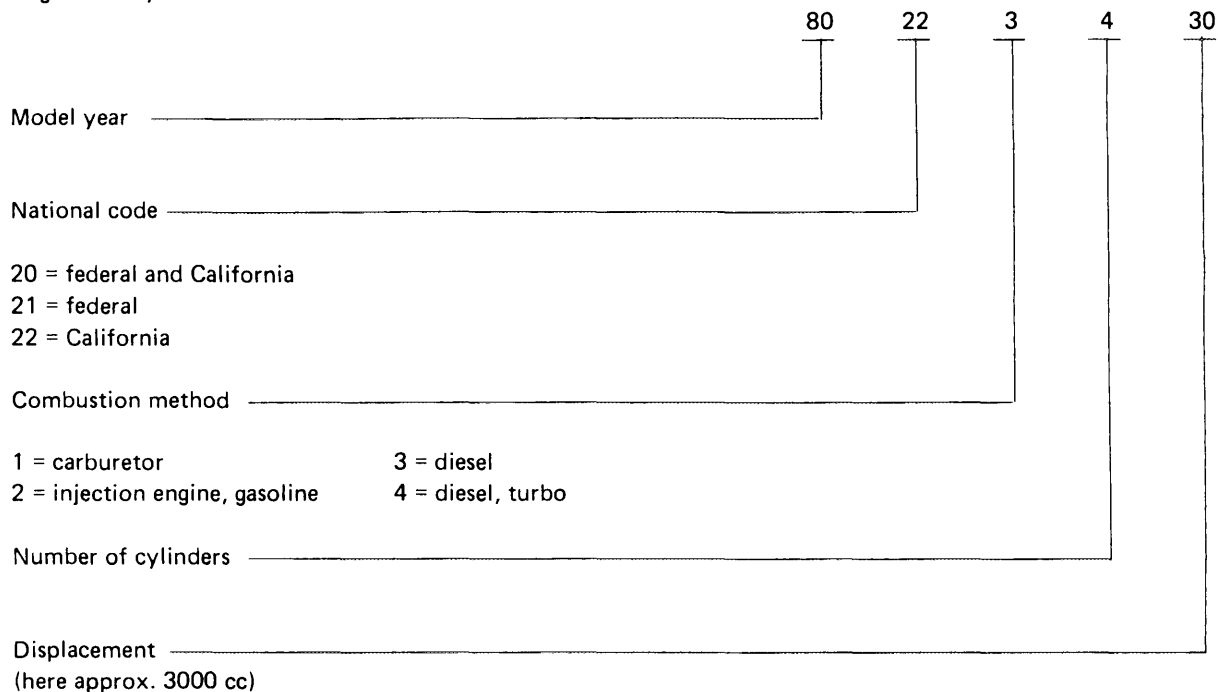


1074-9907

The identification data for model year 1980 are encoded with an 8-digit code, and for model year 1981 in a 10-digit code.

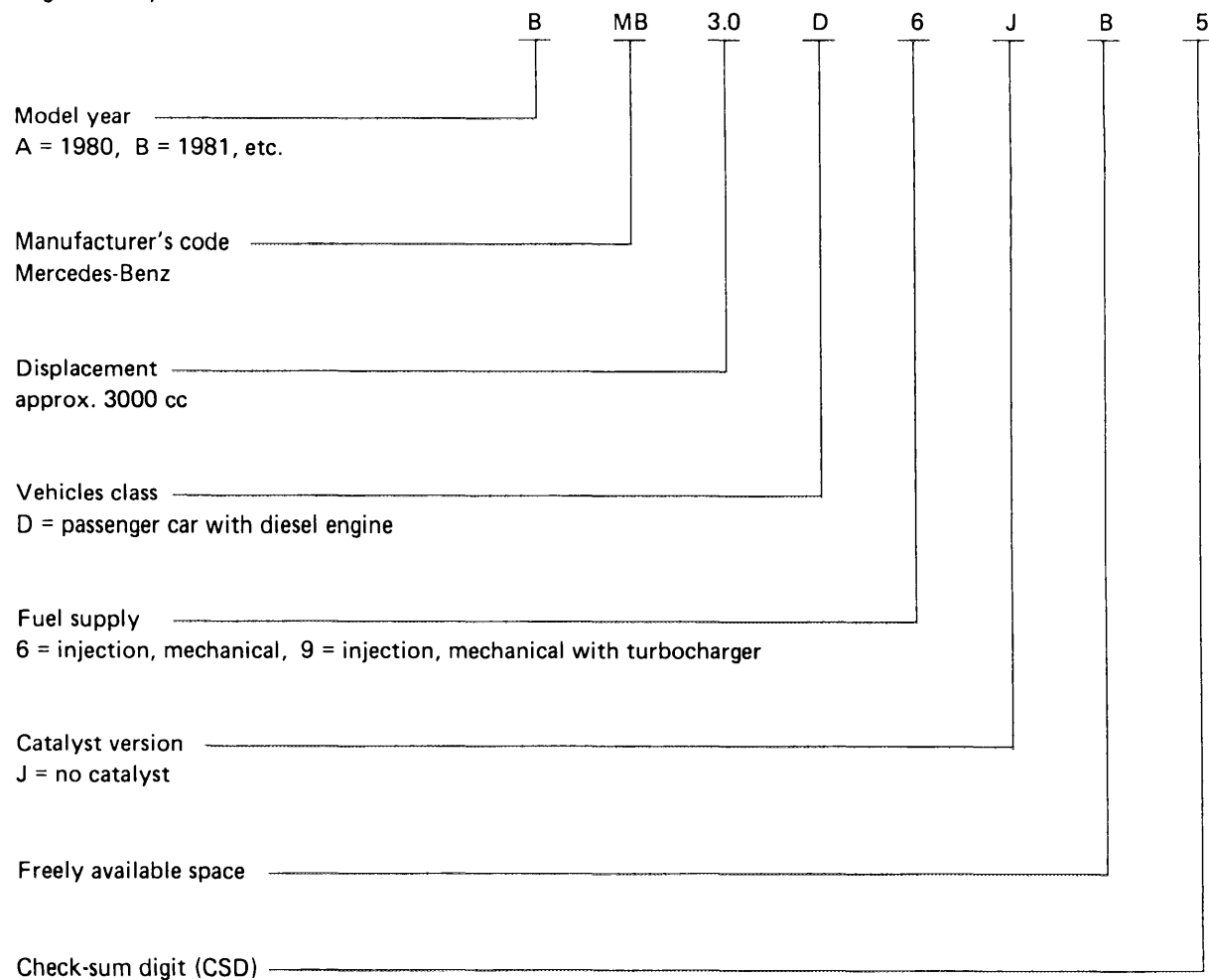
**Example model year 1980:**

Engine family 80.22.34.30



**Example model year 1981:**

Engine family B MB 3.0 D 9 JB 5



**Color code of information labels on radiator bridge**

**Basic color/lettering**

Model year	Federal version	California version
1980	black/white	yellow/black
1981 <sup>1)</sup>	black/white	

<sup>1)</sup> On model year 1981 only one version for federal and California

**Information label on door post of driver's door (2)**

This label shows whether vehicle is provided with or without catalyts.

No catalyst is installed on vehicles with diesel engines (NON CATALYST).



**Information label (3, California only)**

This label is a diagrammatic view of the vacuum lines layout for all emission control components in engine department.

