

A. Lever Type Pump

Disassembly

- 1 Unscrew pump top (1).
- 2 Check valve plates in pump top for damage, renew top if necessary.
- 3 Replace diaphragm (41). To do so, remove rocker arm (71).

Assembly

- 4 For the assembly, proceed in reverse sequence. When assembling the pump top (1), be sure diaphragm (41) is slightly preloaded and rests on the pump body (61).
- 5 Tighten cheesehead screws (91) uniformly and crosswise.

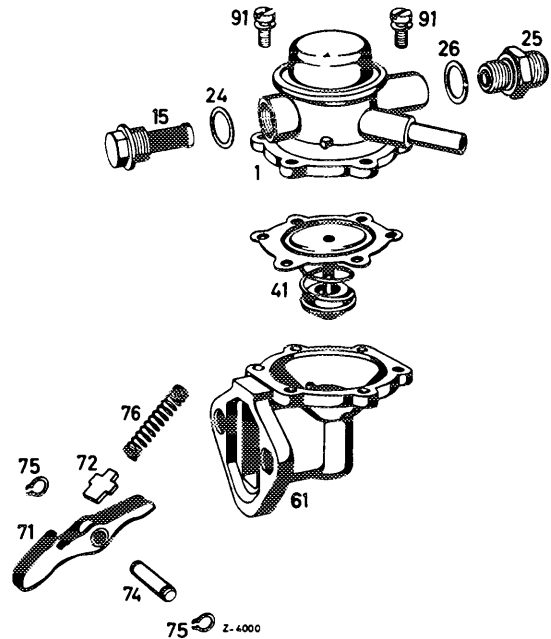


Fig. 07-6/1

- | | |
|-------------------|-----------------------|
| 1 Pump top | 71 Rocker arm |
| 15 Fuel strainer | 72 Spring support |
| 24 Gasket | 74 Axle |
| 25 Screw fitting | 75 Circlip |
| 26 Gasket | 76 Compression spring |
| 41 Pump diaphragm | 91 Cheesehead screw |
| 61 Pump body | |

B. Push Rod Type Pump

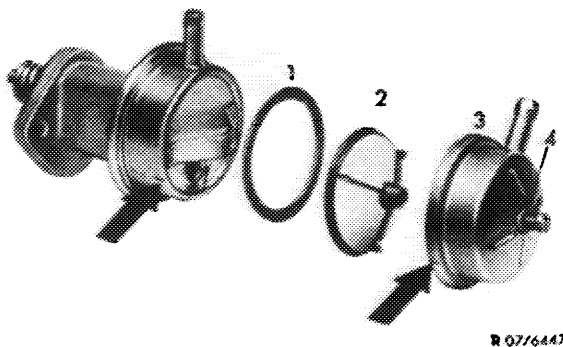


Fig. 07-6/2

- | | |
|-----------------|-------------------|
| 1 Rubber gasket | 3 Pump cover |
| 2 Fuel strainer | 4 Aluminum gasket |

With the exception of the fuel strainer which can be removed, this fuel pump cannot be disassembled any further. In case of repair the fuel pump assembly must be replaced.

The fuel strainer (2) is accessible after the removal of the pump cover (3).

Renew fuel strainer (2), rubber gasket (1), aluminum gasket (4) and screw every 45 000 km.

When mounting the pump cover, the markings (arrow) must be aligned.

C. Measuring Vacuum and Feed Pressure

Measuring Vacuum

- 1 Unscrew both fuel lines from fuel feed pump and connect vacuum gauge to **feed pump inlet**.
- 2 Ground ignition system by connecting a cable from ground to terminal 1 (ignition coil, ignition distributor).
- 3 Crank engine with starter and read off vacuum.

Measuring Feed Pressure

- 4 Connect pressure gauge to feed pump outlet.
- 5 Crank engine with starter and read off feed pressure.

Note: Feed pressure remains approximately steady over the entire speed range.

Should the vacuum or feed pressure not be obtained, the following faults may be at hand:

a) on the lever type pump:
Pump diaphragm defective, pump valves leaking, weak or broken valve spring, weak or broken spring under diaphragm.

b) The push rod type pump must be renewed.

Pump Designation APG			Lever type pump	Push rod type pump
	Measuring point		before pump inlet	
Vacuum	at starting speed	atu	0.3–0.4	–
		mm Hg	230–320	250–350
	Measuring point		behind pump outlet	
Feed pressure	at cranking speed	atü	0.12–0.18	0.25–0.35
	at idle speed	atü	0.18–0.24	–