

Threaded Bushing on Engine Oil Pan for Attaching Carrier for High-Pressure Oil pump

01-3

Model 200 D/8, 220 D/8, 200/8 and 220/8

Prior to installing an exchange engine in a vehicle with power steering - or with subsequently installed power steering - a threaded bushing 8/12 x 13 must be installed into the oil pan top for attaching the carrier for the high-pressure oil pump.

Drill a hole of 8.2 mm dia. with the aid of a self-made drilling template (Fig. 01-3/1).

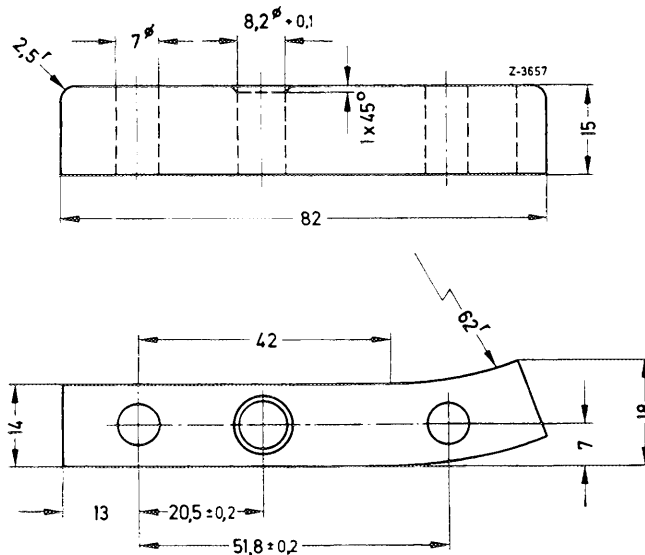


Fig. 01-3/1

Scope

- 1 Unscrew oil pan bottom. Screw drilling template to parting surface of oil pan top.
- 2 Drill hole of 8.2 mm dia.
- 3 Drill hole with a 10 mm drill to depth of 15 mm and cut M 12 threads 14 mm deep into oil pan top and screw-in threaded bushing.

Note: The threaded bushing should not project beyond parting surface of oil pan (Fig. 01-3/2).

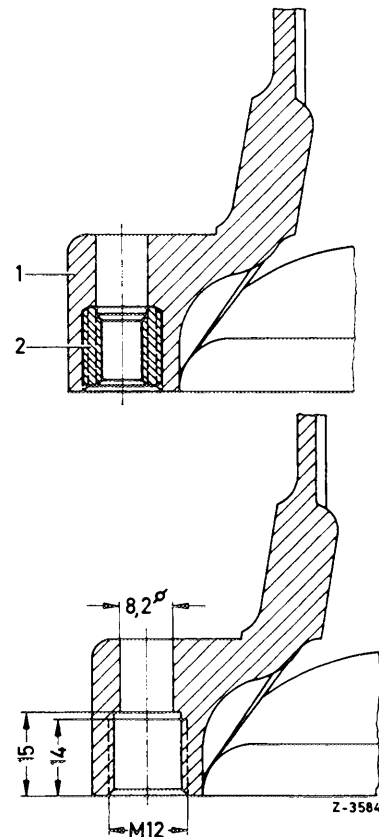


Fig. 01-3/2

Section view of oil pan

- 1 Oil pan top
- 2 Threaded bushing 900 195 008 103

- 4 Clean sealing surface on oil pan and mount bottom with a new gasket to oil pan top (tightening torque of hexagon socket screw 0.8 kpm).